

## Echolink setup for use with an RF link for JOTA.

If your JOTA station does not have an internet connection available on site, you can still use the Echolink system. Ask your radio amateur to determine which VHF or UHF link station is nearby and within reach of your JOTA station. Next, obtain the co-operation of the operator of your local link station. The link stations can be found by visiting:

<http://www.echolink.org/el/links.asp>.

Via your VHF or UHF station you can contact other JOTA stations via Echolink by transmitting their node number in DTMF tones.

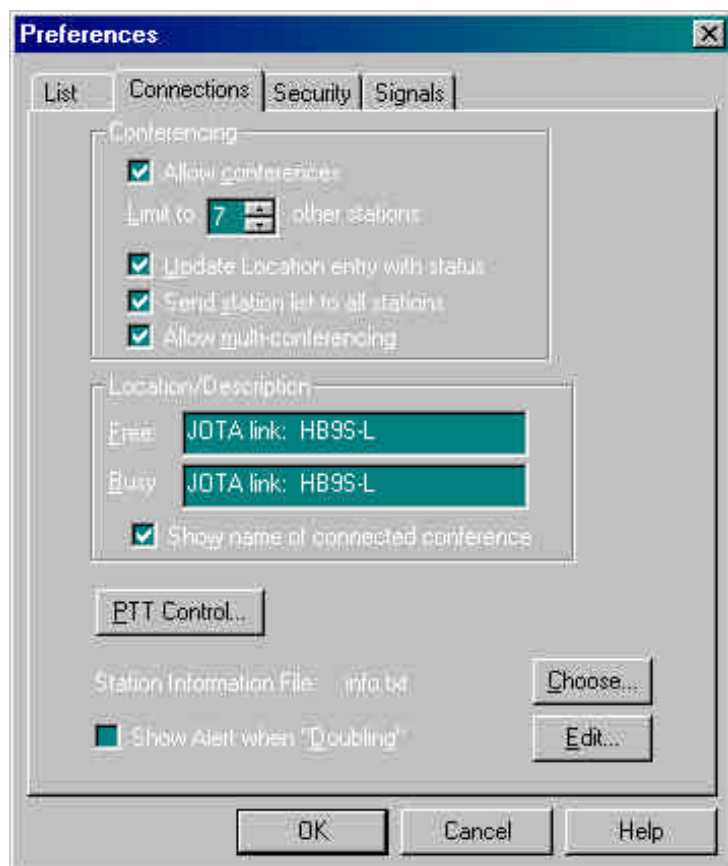
In most countries, link stations need to be manned, i.e. the link operator must be physically present. However, you could ask the link operator if he would be kind enough to seek permission from the National Telecommunications Authority for 2 days unattended operation. with supporting information about the JOTA event, stating the case for this temporary facility.



Ask the link operator if he would be kind enough to change his welcome voice file (automatically transmitted at each new contact) to indicate that there are JOTA contacts to be made from this RF-link station.

The link operator can also change his Location description in the software, under **TOOLS Preferences Connections** enter:

JOTA link station (call sign)  
in both the free and busy boxes.  
As an example, the picture shows the info of HB9S, the World Scout Bureaus link station.



Thanks to Ron Hart, G4SNT, for providing the technical information for this instruction.