



Handy helpers

Author: Richard Middelkoop
Saved From : www.scout.org

A collection of tools that can help you with your radio-scouting programme.



Calculate the radio path to your destination and find out at which time and HF band you can best make a sked. Download and install this handsome [propagation wizard](#)

New:
the 2011 logbook program Keep a record of all the contacts you have made. (tnx Wollter Nijmeijer PA5WN)

Add almost 400 international JOTA stations to the Jamboree Logbook Program. These are the stations that registered themselves in the international world-wide database.

1. Download the [file](#) **Remember One** where you save this file.
2. Make sure that the import / export option is enabled in the setup part of the program
3. Start the logbook program and select import / export from the main menu.
4. Answer the question what to do with duplicate records
5. Select the file you downloaded in step 1
6. Done!

A complete
JOTA [in the German language](#) (tnx Klaus DC4NA).

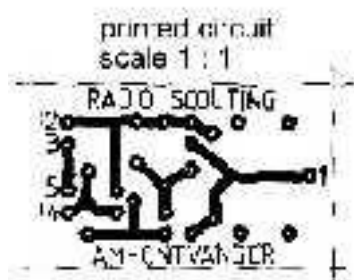
Calculate your QTH (1000) (Thanks to Frank van der Berges, G3HJ, this QTH calculator group Zwolle).

All the [JOTA wjols](#) have been used since 1958 in one big zip file (2.7 Mb).

JOTA on cards and stamps, for the [collectors](#).



A perpetual forecast for radio conditions. Yes, unbelievable but it's true. See for yourself . This will be most helpful to pre-arrange your JOTA radio contacts (Thanks Les Mitchell, G3BHK).



Electronic kit building is a popular activity during the JOTA and related activities. Looking for ideas? Then click the logo.

Looking for a place to order kits and components ready for your Scout kit-building activity? Check out this on-line [kitbuilding webshop](#)



Here's the map you always wanted: a world map that shows you the **actual local times anywhere in the world**. It gives you a daylight and night picture, directions to the sun and moon, and, of course, ~~the~~ [Greenwich Mean Time \(GMT\)](#). Great for JOTA!! It can also be installed as a screensaver. [Download](#) extracting file for your PC now (400kb).

Are you into [batting and collecting QTCs](#)? The QTC badge is from around the world.

Want to know if anyone has already sent you an electronic QSL card of the contact you made? Check it [here](#)

How can you **find the contact address** of the radio amateur you've just spoken too? Simple: type his call sign in the search box of the QRZ web site. It will present you all the info you need.



Still looking for that phone number or email address of your friends somewhere around the globe? Then try this : all the world's phone and email directories.